

FOR SALE

# 16401 Table Mountain Parkway Golden, Colorado

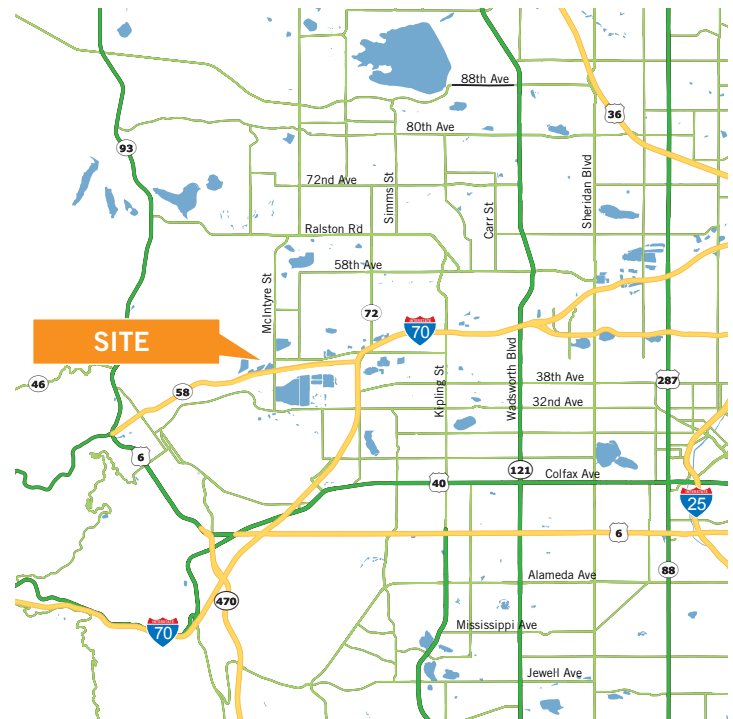


Land - Coors Technology Center  
3.32 Acres - \$500,000

## Features

Total SF: 3.32 Acres (144,837 SF)  
Topography: Gently sloping  
Zoning: PUD - Industrial  
Taxes: \$12,625.40

- Spectacular mountain views
- Excellent access
- Close proximity to Historic Golden, hotels, golf courses and many other amenities
- Coors Technology Center tenants include: Coors, Ball Corporation, Epilog Corporation, VW/Audi, CoorsTech, Xcel Energy, Mobile Energy, Fulcrum Publishing and others



For more information, please contact:

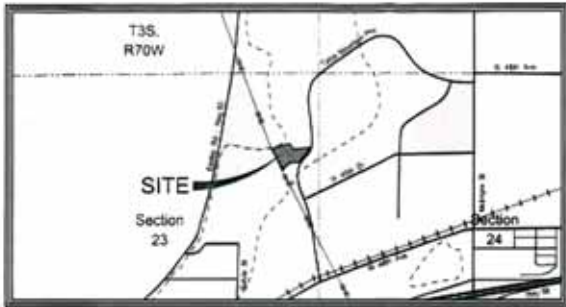
**Steve Poole, CCIM**  
Vice President  
303-312-4221  
spoole@ctfuller.com

1515 Arapahoe Street, Suite 1200  
Denver, Colorado 80202  
ph: 303-292-3700  
fx: 303-534-8270  
www.ctfuller.com

**Paige Coker Heiman**  
Acquire, Inc.  
303-448-1400  
pch@insideacquire.com

# 16401 Table Mountain Parkway

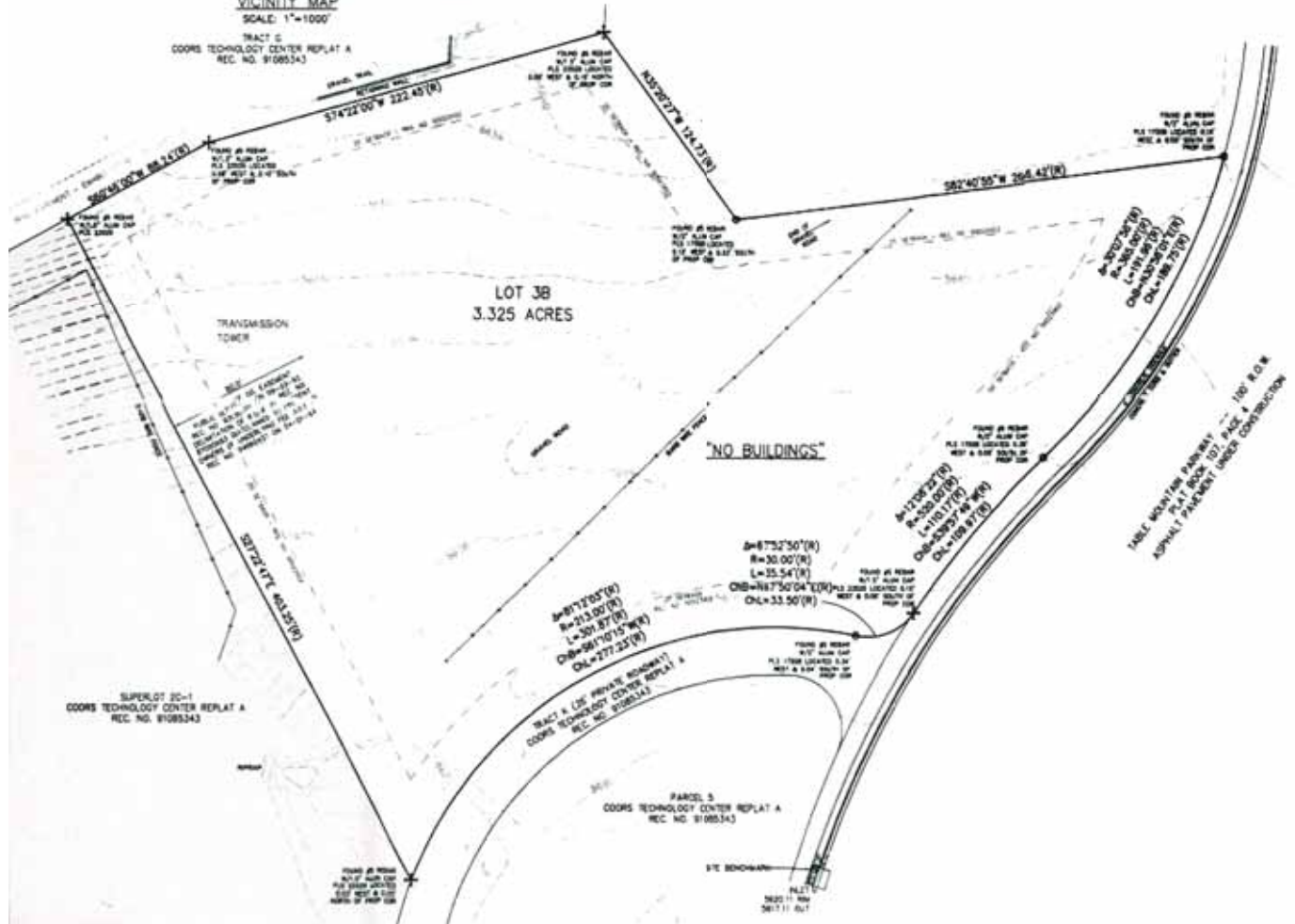
Golden, Colorado



VICINITY MAP

SCALE: 1"=1000'

TRACT C  
COORS TECHNOLOGY CENTER REPLAT A  
REC. NO. 91085343



Listing #21743

For more information, please contact:

**Steve Poole, CCIM**  
Vice President  
303-312-4221  
spoole@ctfuller.com

1515 Arapahoe Street, Suite 1200  
Denver, Colorado 80202

ph: 303-292-3700  
fx: 303-534-8270

www.ctfuller.com

**Paige Coker Heiman**  
Acquire, Inc.  
303-448-1400  
pch@insideacquire.com